

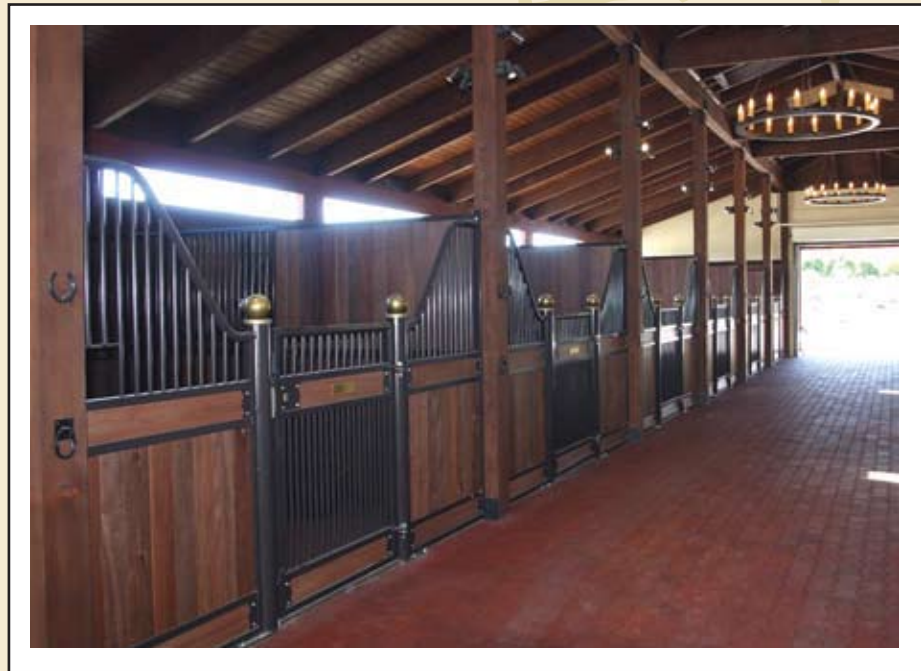


ARTISAN SERIES

THE SAVANNAH

Horse Stall

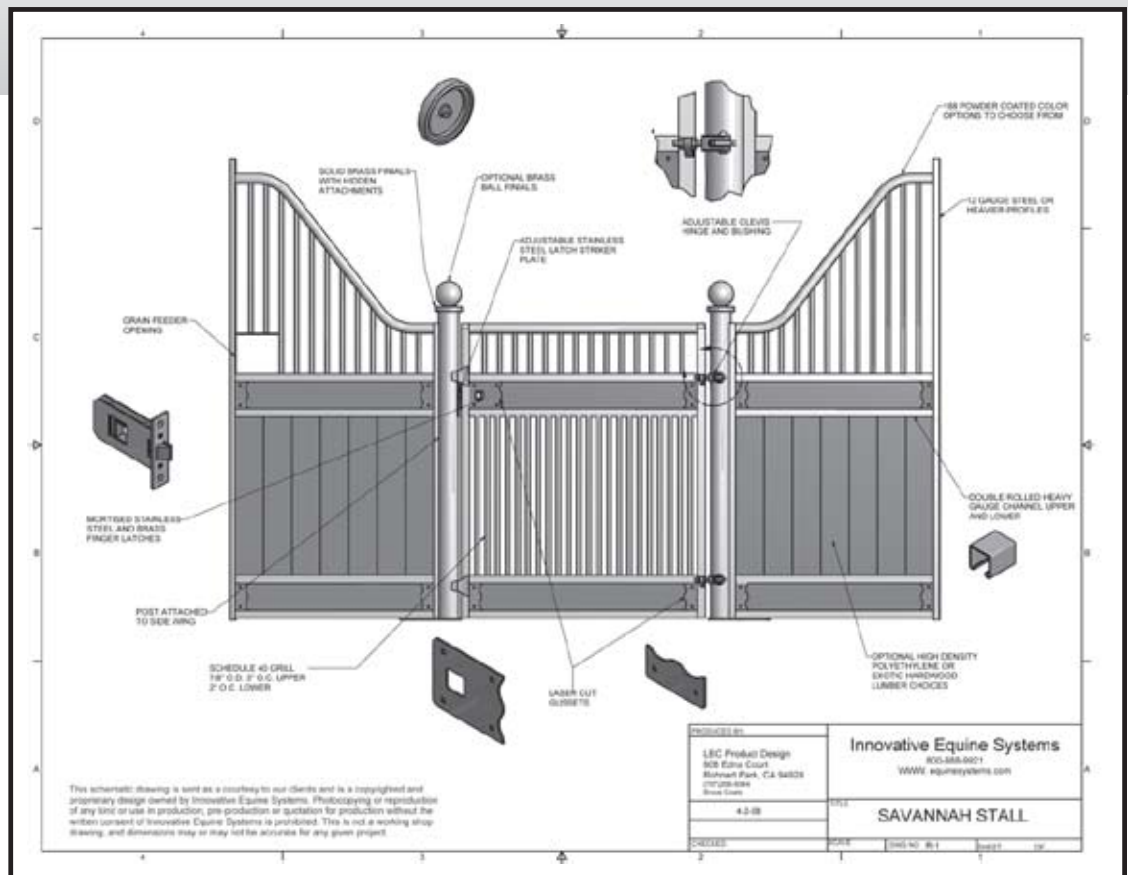
- Open front stall for the socialization on which horses thrive
- For post and beam construction or clear span buildings
- Two radiused wings with grill tops and horizontal panels
- Hinged centered door with tightly spaced grill
- Heavy duty door posts with adjustable hinge attachments
- Convenient grain feed opening on left wing



The Savannah is our most elegant – and most requested – stall, and is one of the four hinged-style stall doors that we offer. Its beauty is evident in the exceptional craftsmanship of the curved wings, the quality of the steel and hardware, and the durability and variety of powder coating colors. Flat brass finials, unique finger door latches, and adjustable clevis hinges with “never-need-greasing” bronze bushings are standard features that set this horse stall apart from the competition. The Savannah is the ultimate in design and function.

Savannah Specifications

- Centered hinged door
- Wings w/double 56 degree 7" center line radius using 1-1/2" pipe (1-7/8" O.D.)
- Mortised stainless steel finger latch w/brass striker
- Stainless steel adjustable radiused latch striker plate
- Laser cut latch plates and gussets
- Horizontal gusseted panels for inset lumber
- Solid brass flat finials
- Finial attachment hidden with welded 1/4" nut and All-thread internal screw
- Cammed adjustable stainless steel door hinges
- Bronze hinge bushings
- Double rolled 11 gauge channel for lumber .90 I.D. 1-5/8"x1-5/8" O.D.
- Attachment height 90" (high side)
- Radius grills to 86" (high side)
- Latch side and hinge side posts 4" schedule 10 pipe 60" high (low side)
- Radiused 3/8" thick base plate for floor attachments
- Upper grill 1/2" schedule 40 pipe (7/8" O.D.) 3" O.C.
- Lower grill door 1/2" schedule 40 pipe (7/8" O.D.) 2" O.C.
- Powder coated choice of 188 colors
- Hinged right (standing from outside) unless otherwise requested



Options

- Partition posts with 10" base plate and hardware (for clear span buildings)
- 1" x 5" kiln-dried, tongue and groove hardwood
- 1" x 6" high-density polyethylene tongue and groove lumber
- Brass ball finials