

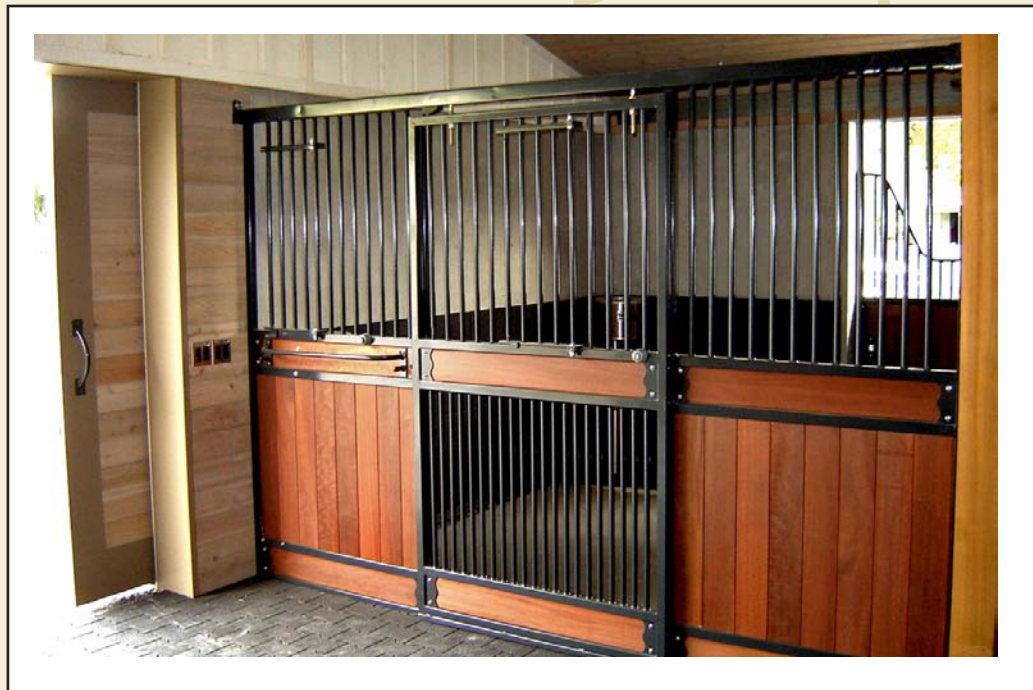


ARTISAN SERIES

THE MONTANA

Horse Stall

- High front style for extraordinary security
- For post and beam construction or clear span buildings
- Two wings with full grill tops and horizontal panels
- Centered sliding door with full grill top and bottom
- Spring-loaded latching system for easy, one-handed entry
- Quiet and smooth trolleys and track
- Convenient grain feed opening on left wing

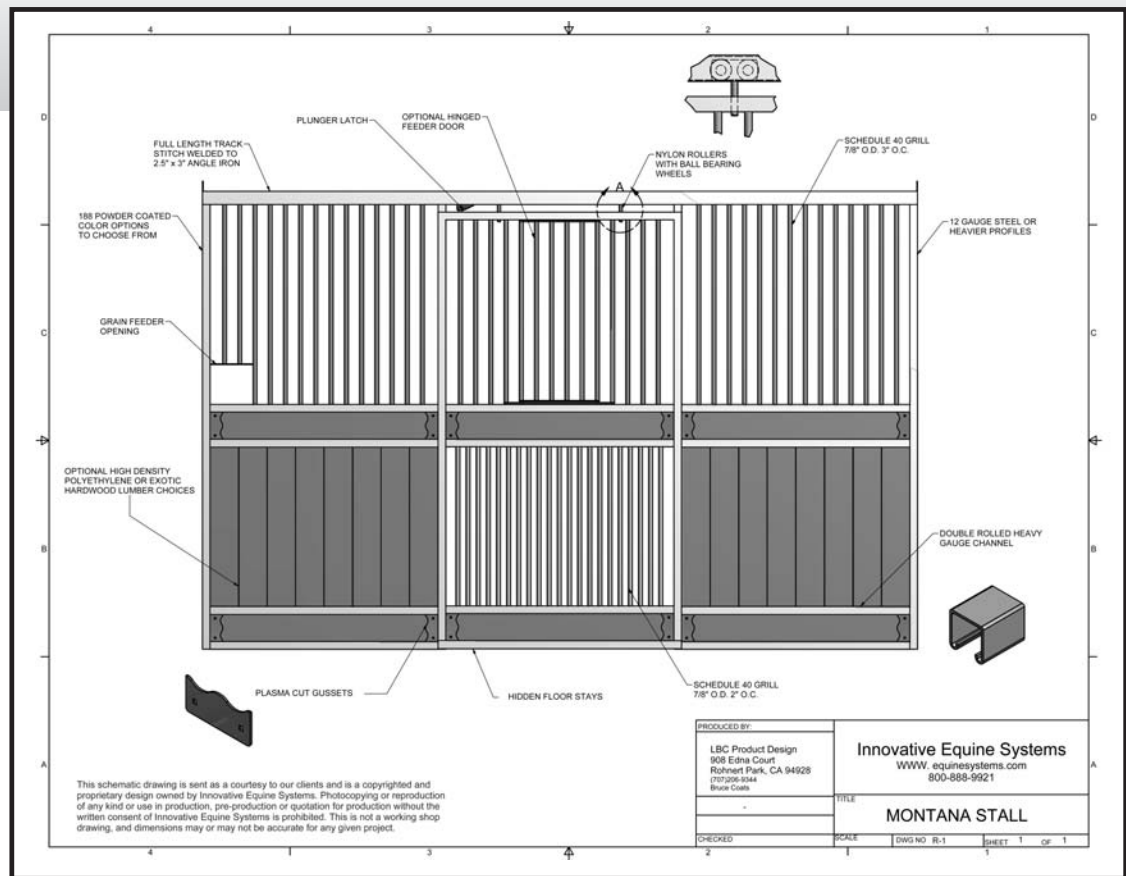


The Montana, one of our sliding stall models, can be used in either post and beam construction or a clear span building. This beautiful stall is a great choice for boarding and training facilities, as the high front proves a deterrent against unknown equine personalities.

The centered door has full grills upper and lower for the ventilation and air flow so critical to the health of your horse. The door opens via our unique and easily operated plunger latch, which has no potentially dangerous parts that protrude into the stall door opening. Horizontal wood panels in both the stall front and the wings increase the strength and beauty of the stall. The door stall slides in the track on smooth and quiet trolleys. A grain feed opening is standard with this stall, or you can add one of our hinged feeder doors if you need more room or would like to give your horse a chance to peek his head out of the stall.

Montana Specifications

- Centered sliding door with full grill top and bottom
- Spring plunger latch system
- Hidden Delrin receiver
- Double rolled 11 gauge channel for lumber .90" I.D. 1-5/8"x1-5/8" O.D.
- Ball bearing sliding hardware with nylon rollers
- Attachment height 90"
- Nylon door stays
- Adjustable rubber stop attached to inside of track
- Upper grill 1/2" schedule 40 pipe (7/8" O.D.) 3" O.C.
- Lower grill 1/2" schedule 40 pipe (7/8" O.D.) 2" O.C.
- Powder coated choice of 188 colors
- Sliding door left (standing from outside) unless otherwise requested



Options

- Hinged feeder door
- Partition posts with 10" base plate and hardware (for clear span buildings)
- 1" x 5" kiln-dried, tongue and groove hardwood
- 1" x 6" high-density polyethylene tongue and groove lumber
- Full length steel header