



ARTISAN SERIES

THE LEXINGTON

Horse Stall

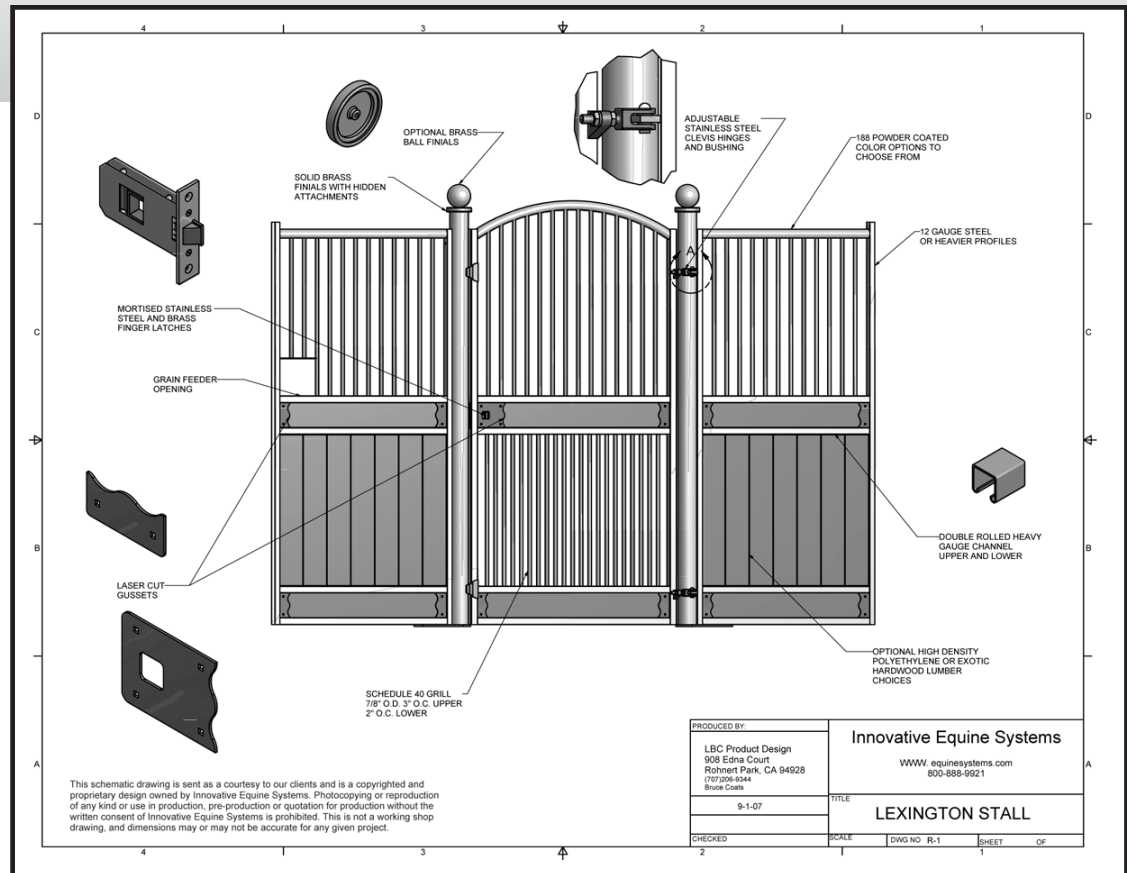
- High front style for extraordinary security
- For post and beam construction or clear span buildings
- Hinged radiused centered door with full grill top and bottom
- Two wings with full grill tops and horizontal panels
- Heavy duty door posts with adjustable hinge attachments
- Convenient grain feed opening on left wing



The Lexington has been designed for our clients who like the features of the Savannah but want a hinged door with a high stall front. This stall – perfect for stallions or horses needing to be fully contained - has the same exciting features, including solid brass finials, standard finger door latches, and adjustable clevis hinges with “never-need-greasing” bronze bushings.

Lexington Specifications

- Centered hinged door
- Wings at 88" straight to radius door top using 1-1/2" pipe (1-7/8" O.D.)
- Mortised stainless steel finger latch w/brass striker
- Stainless steel adjustable radiused latch striker plate
- Laser cut latch plates and gussets
- Horizontal gusseted panels for inset lumber
- Solid brass flat finials
- Finial attachment hidden with welded 1/4" nut and All-thread internal screw
- Cammed adjustable stainless steel door hinges
- Bronze hinge bushings
- Double rolled 11 gauge channel for lumber .90 I.D. 1-5/8" x 1-5/8" O.D.
- Attachment height 90" (high side)
- Latch side and hinge side posts 4" schedule 10 pipe 90" high
- Radiused 3/8" thick base plate for floor attachments
- Upper grill 1/2" schedule 40 pipe (7/8" O.D.) 3" O.C.
- Lower grill (door) 1/2" schedule 40 pipe (7/8" O.D.) 2" O.C.
- Powder coated choice of 188 colors
- Hinged right (standing from outside) unless otherwise requested



Options

- Partition posts with 10" base plate and hardware (for clear span buildings)
- 1" x 5" kiln-dried, tongue and groove hardwood
- 1" x 6" high-density polyethylene tongue and groove lumber
- Brass ball finials